

# Industry 4.0

# System integration

## Big data

## Augmented reality

## Autonomous robots

## Simulation



### One Unified Platform to Run Your Entire Factory

Cimetricx Sapience® Platform (Sapience) is a cloud-native smart factory platform to seamlessly connect varying factory equipment within a single event-driven framework.

The Sapience platform provides rapid-deployment tools for factories to mine the treasure trove of data available from shop floor equipment, driving actionable insights for optimal decision-making.

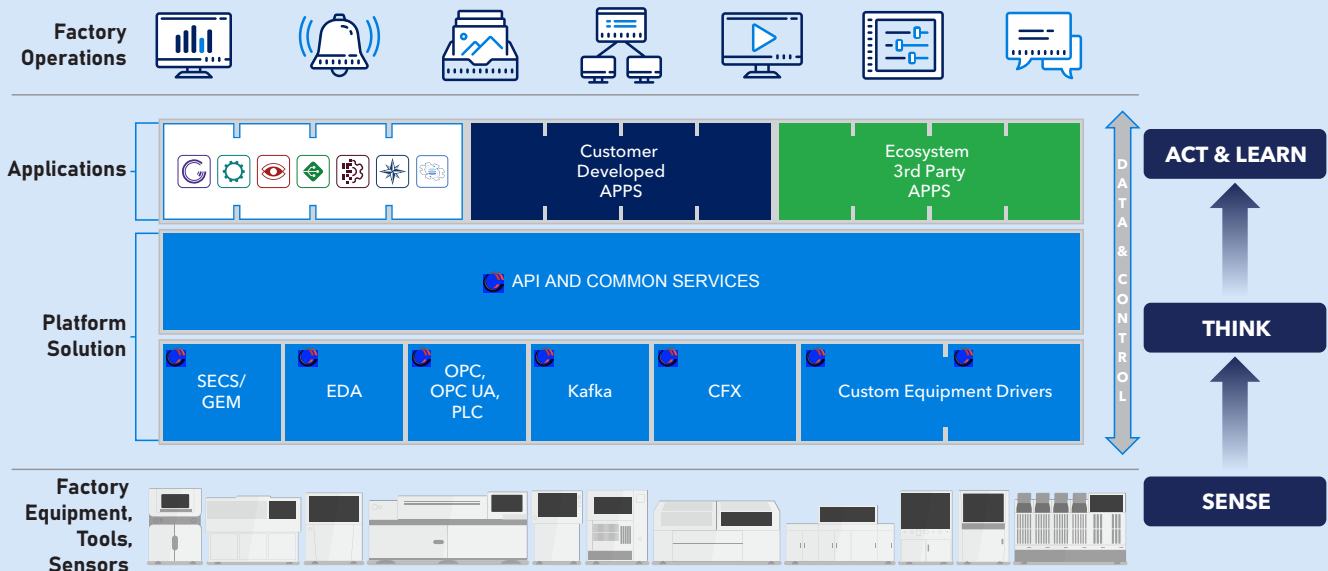
Seamless connectivity allows factory IT systems direct access to factory equipment. Resulting equipment communication, data collection, and process control establishes the foundation for Industry 5.0, Big Data, and Smart Factory initiatives.

### Single Platform Solution - to Connect all Factory Equipment

**Application Ecosystem:** Multiple software applications can connect to all factory equipment through the single platform - resulting in an ecosystem of in-house developed applications, 3rd party software, and Cimetricx Sapience applications.

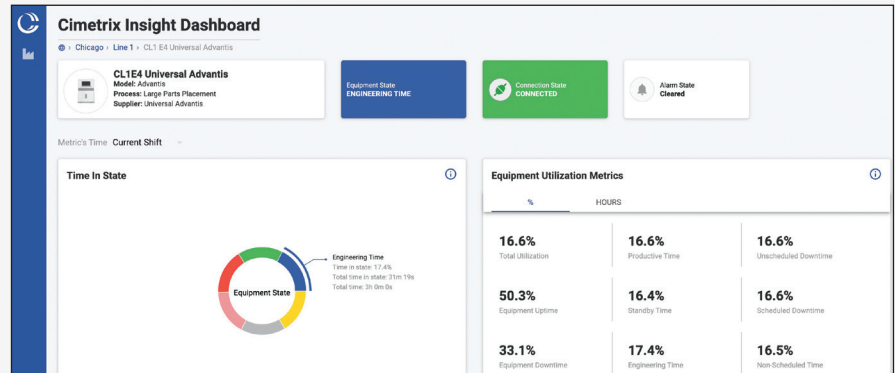
**API & Common Services Layer:** The Sapience platform provides API's and common services allowing multiple factory applications direct access to factory equipment.

**Connector Layer:** IIoT-ready Sapience platform leverages industry standard protocols to seamlessly connect varying factory equipment. The framework provides equipment connectivity using a simple common user-friendly Configuration Manager.



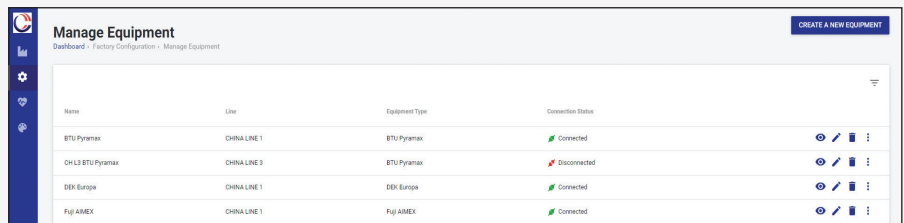
## Sapience Insight

Sapience Insight is a cloud-native application that collects, analyzes, and displays overall equipment effectiveness data. The OEE Module is a key component of the Cimetrix Sapience application ecosystem designed to quickly provide actionable information with minimal configuration. Upon establishing an equipment connection, the OEE Module automatically begins collecting real-time equipment utilization and alarm data.



## Sapience Compass

The Sapience platform ships with this application to enable a single common editor to configure shop floor equipment across the platform. An intuitive user interface provides intuitive add/edit/delete functions to configure varying equipment across multiple lines and factories. An equipment management view allows a single view of configured equipment including real-time connection state and debugging tools to maintain communication. Additionally, the central configuration editor provides an administrator a single view to manage the status of the entire platform.



Name	Line	Equipment Type	Connection Status
BTU Pyramax	CHINA LINE 1	BTU Pyramax	Connected
CH L3 BTU Pyramax	CHINA LINE 2	BTU Pyramax	Disconnected
DEX Europa	CHINA LINE 1	DEX Europa	Connected
Fuji AMEX	CHINA LINE 1	Fuji AMEX	Connected

## Sapience Godel

Sapience Godel is a cloud-native analytics application that transforms factory floor data into easily accessible insights for the electronics industry. Wrangling of factory floor data previously meant weeks or months of connecting tools, data discovery, mapping, exploring, and previewing raw data and descriptive statistics. Godel automates and simplifies these steps to where an engineer or data scientist can discover, map, and visualize data in hours or days.

